



Joan Kirner Women's and Children's Quick Reference Guide

Patient and Visitor Access

Emergency/Unplanned Presentations and Location of Care

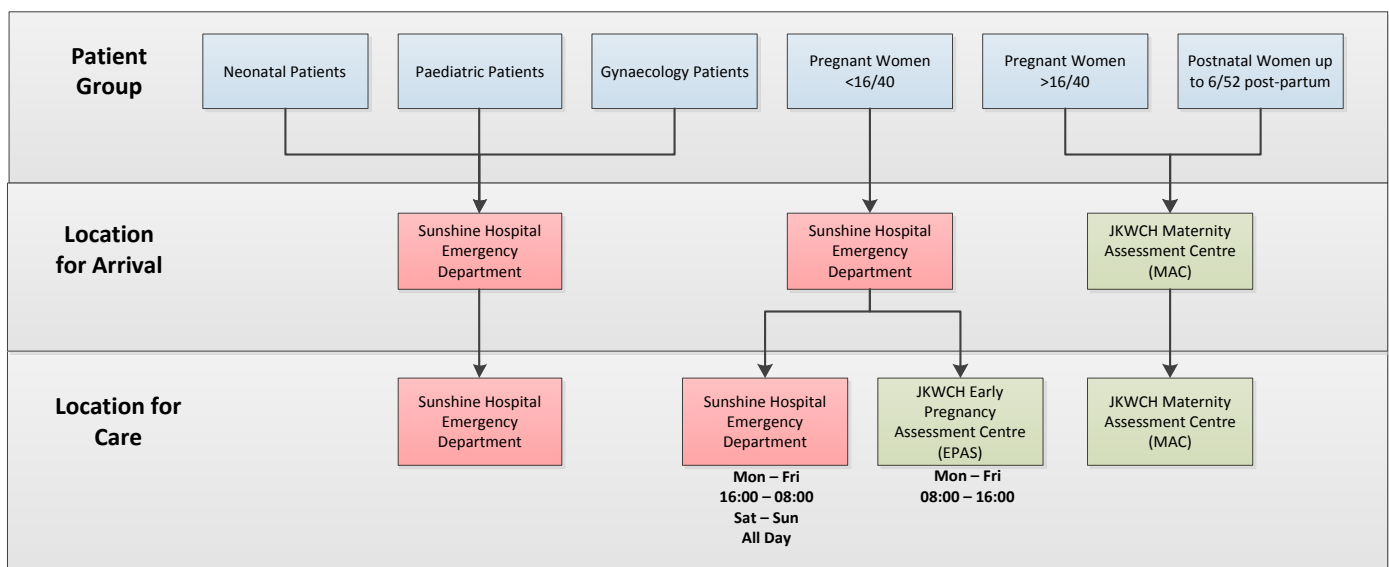


Figure 1: Women's and Children's Emergency/Unplanned Presentations and Location of Care

Patient & Visitor Access to the JKWC

In Hours (06:00 – 20:30)

- In hours, all patients and visitors and staff can access the JKWC via:
 - The main front entry doors, located on the Ground Floor
 - The ground floor link between the JKWC and Sunshine Hospital

After Hours (20:30 – 06:00)

- After hours, the JKWC is secured and entry is restricted through the main front entry doors
 - Patients and visitors will request access using the video intercom located at the main front entry
 - Staff will use their swipe access cards to enter after-hours
- The JKWC has a dedicated 24 hour security presence on the Ground Floor which will facilitate after-hours access for patients and visitors
- Pregnant or postnatal women requiring care will be directed to the Maternity Assessment Centre (MAC), located on Level Three

- Visitors and family members will be signed in by security and directed to the relevant ward



Ambulance Access to the JKWC

- Ambulance Victoria (AV) vehicles carrying children, women with gynaecology concerns, and pregnant women <16 weeks gestation will present to the main Sunshine Hospital (SH) Emergency Department (ED)
- AV vehicles carrying pregnant women >16 weeks gestation with a pregnancy-related concern will triage the woman to determine admission requirements and may present to either the SH ED or directly to the JKWC ambulance bay and back of house (BOH) lift lobby as detailed in Figure 2
- Non-emergency patient transport (NEPT) vehicles will present to the JKWC ambulance bay and BOH lift lobby
- PIPER vehicles will access the JKWC via the JKWC ambulance bay and back of house lift lobby

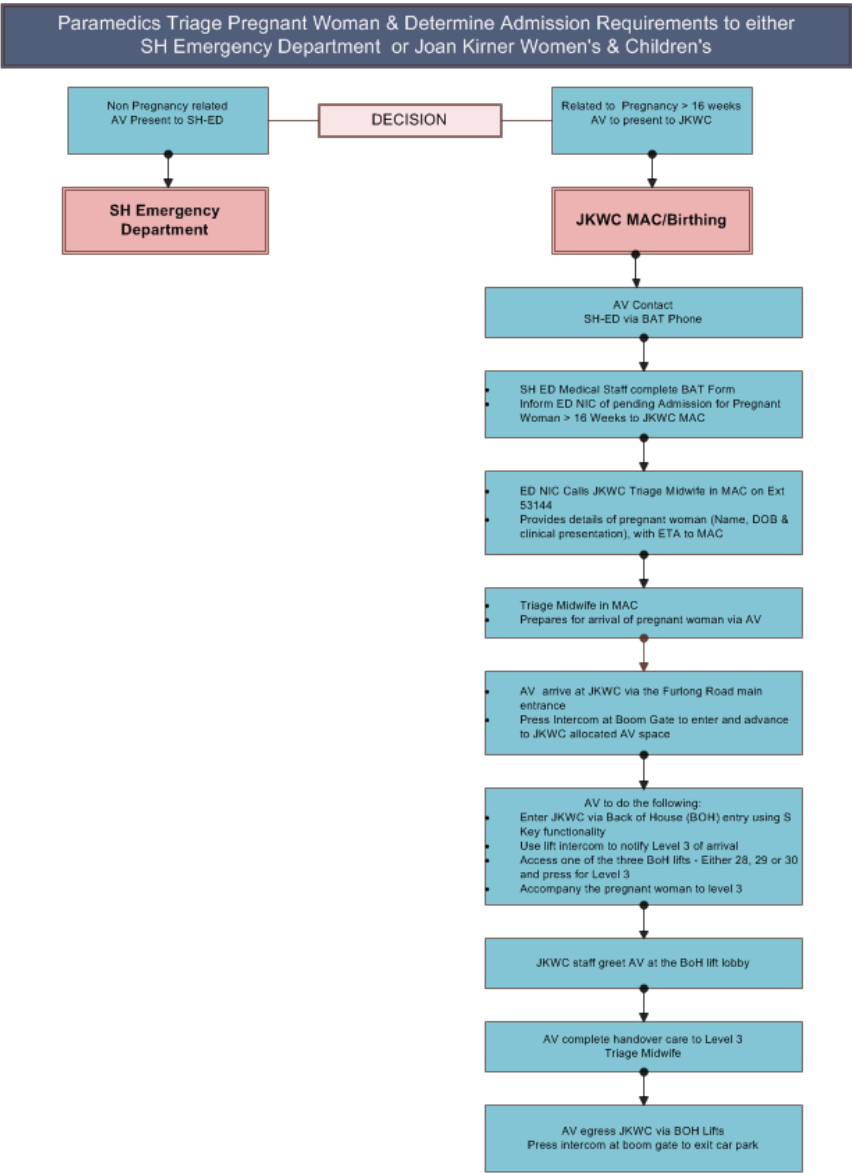


Figure 2: Pregnant Women AV Arrivals