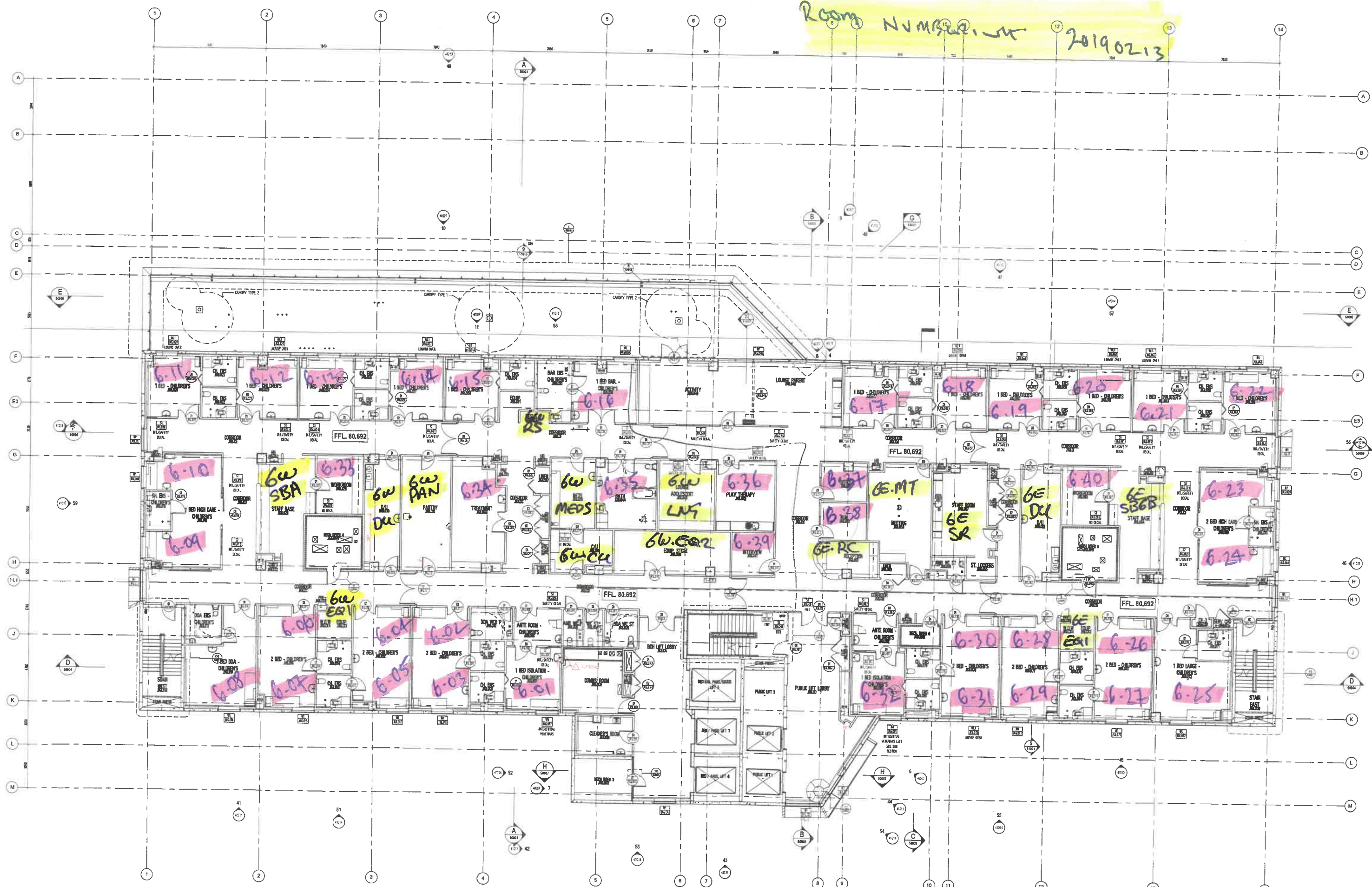






Room Numbers 20190213



**STRUCTURAL & CIVIL ENGINEERING**  
**IRWINCONSULT PTY LTD**  
 Level 3, 289 Warrington Parade South East Melbourne  
 Victoria, 3026, Australia  
 T (03) 9522 9700

**SERVICES, ESD, & AV ENGINEERING**  
**WATERMAN AHW PTY LTD**  
 50 Park Street, South Melbourne  
 Victoria, 3205, Australia  
 T (03) 9685 9900

**COST CONSULTANT**  
**CURRIE & BROWN**  
 Level 2, 178 Danden Street  
 Melbourne, Victoria, 3000, Australia  
 T (03) 9631 0000

**FIRE SAFETY**  
**AECOM**  
 Level 45, 83 Collins St,  
 Melbourne, Victoria, 3000, Australia  
 T (03) 6863 1234

**LANDSCAPE ARCHITECT**  
**URBAN INITIATIVES**  
 Ground Floor, 143 Franklin Street  
 Melbourne, Victoria, 3000, Australia  
 T (03) 9329 6844

**BUILDING SURVEYOR**  
**PLP BUILDING SURVEYORS**  
 Level 4, 63 Exhibition Street  
 Melbourne, Victoria, 3000, Australia  
 T (03) 9666 7888

**CLIENT**  
 Department of Health and Human  
 Services

**VICTORIA**  
 State Government

**Western Health**

REV.	DETAILS	DATE
24	WHICHES APPROVED PLANNING CHANGES	07/08/2017
25	FLOOR PLAN AMENDMENTS	14/09/2017
A	ISSUE FOR CONSTRUCTION	12/10/2017
B	ISSUE FOR CONSTRUCTION - RFP PANEL (LL-0004-100277)	06/11/2017
C	ISSUE FOR CONSTRUCTION - INTERNAL GLAZING (LL-0004-100282 & LL-0704-1412)	17/11/2017
D	CONCRETE PROFILE & WALL ALIGNMENTS (LL-0004-100284)	23/11/2017
E	ISSUE FOR INFORMATION - RE CONCRETE WALLS (LL-0004-100285) & CONCRETE WALLS (LL-0004-100286) ELEC RISER DELIVERY (SHS-C-000232) BEDHEAD CHANGERS (SHS-C-000233) & BEDDING BEVERAGE BAY (SHS-C-000218)	30/11/2017
F	ISSUE FOR CONSTRUCTION	21/02/2018
G	ISSUE FOR CONSTRUCTION	25/05/2018
H	ISSUE FOR CONSTRUCTION	06/07/2018

Level 3, 245 Bourke Street  
 Melbourne, Victoria  
 Australia, 3000  
 T +61 3 9600 2818  
 F +61 3 9600 2819  
 lyons@lyonsarch.com.au  
 www.lyonsarch.com.au

**PROJECT**  
**JOAN KIRNER WOMEN'S  
 AND CHILDREN'S HOSPITAL**  
 FURLONG ROAD, ST ALBANS

**DRAWING TITLE**  
**LEVEL 6 FLOOR PLAN**

**FOR CONSTRUCTION**

SCALE  
 1 : 100 @ B1

DATE  
 JUN '17

REVISION  
 H

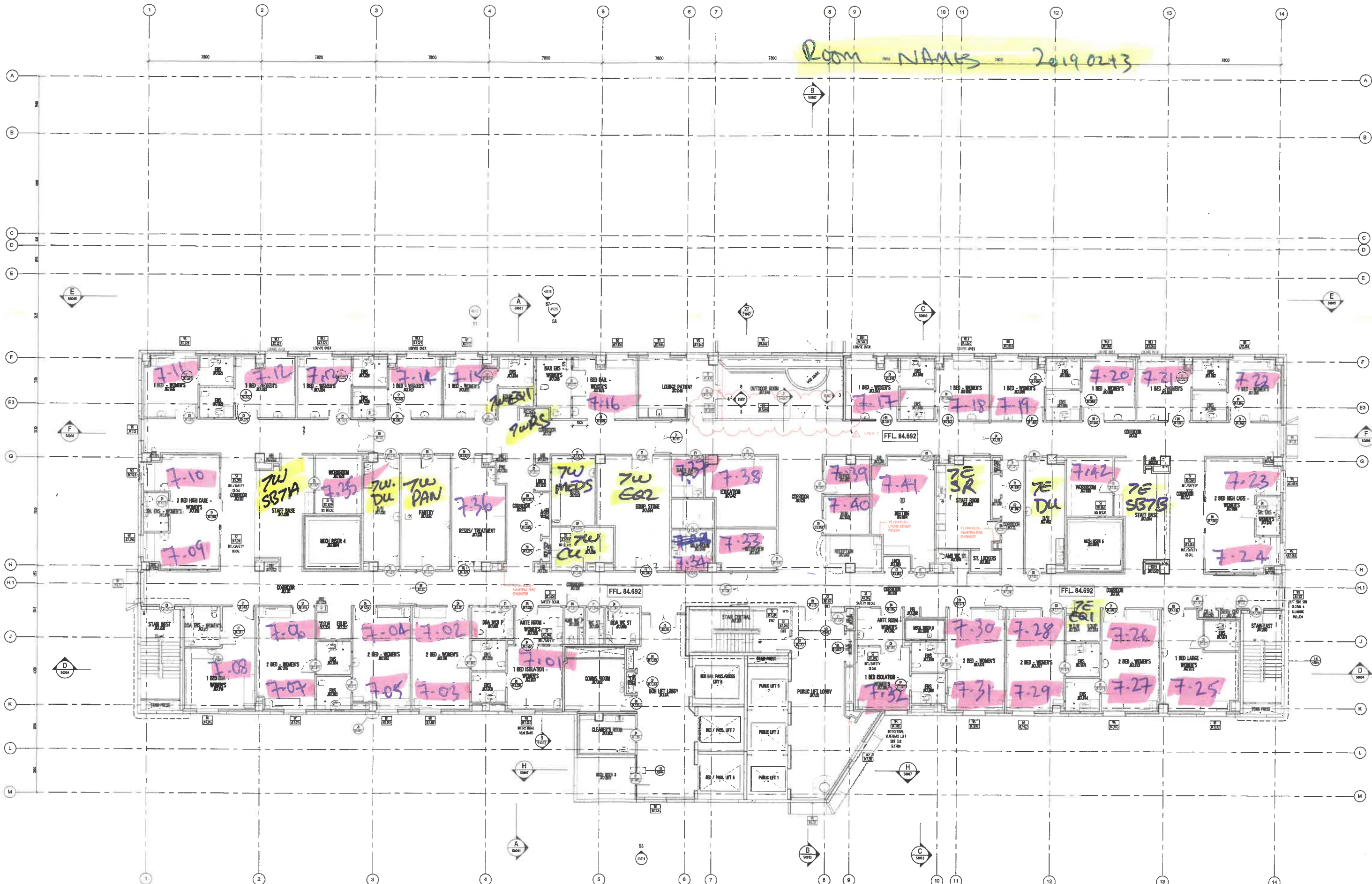
JOB No. SH05 YC  
 DRAWN BY SM  
 CHECKED BY SM

DRAWING No. AR-22 - 22006

FILE: C:\Users\m\Documents\Projects\JOAN\_KIRNER\_WOMEN'S\_HOSPITAL\Level 6 Floor Plan.dwg  
 PRINTED: 07/10/2018 7:40:30 PM

ALL DIMENSIONS ARE IN MILLIMETERS. DO NOT SCALE DRAWINGS FOR CRITICAL DIMENSIONS. CHECK DRAWING IS TO SCALE BY MEASURING SCALE BAR BELOW. VERIFY ALL DIMENSIONS ON SITE BEFORE COMMENCING ANY WORK. SHOP DRAWINGS OR ORDERING MATERIALS.





Room NAMES 2019 02+3

**STRUCTURAL & CIVIL ENGINEERING**  
**IRWINCONSULT PTY LTD**  
 Level 3, 289 Williamston Parade South East Melbourne  
 Victoria 3206 Australia  
 T (03) 9822 9700

**SERVICES, ESD, & AV ENGINEERING**  
**WATERMAN AHW PTY LTD**  
 63 Park Street, South Melbourne  
 Victoria 3205, Australia  
 T (03) 9655 9000

**COST CONSULTANT**  
**CURRIE & BROWN**  
 Level 2, 170 Queen Street,  
 Melbourne, Victoria, 3000, Australia  
 T (03) 9691 0000

**FIRE SAFETY**  
**AECOM**  
 Level 45, 90 Collins St,  
 Melbourne, Victoria, 3000, Australia  
 T (03) 9653 1234

**LANDSCAPE ARCHITECT**  
**URBAN INITIATIVES**  
 Ground Floor 143 Flinders Street  
 Melbourne, Victoria, 3000, Australia  
 T (03) 9329 6944

**BUILDING SURVEYOR**  
**PLP BUILDING SURVEYORS**  
 Level 4, 83 Exhibition Street  
 Melbourne, Victoria, 3000, Australia  
 T (03) 9650 7999

**CLIENT**  
 Department of Health and Human  
 Services

**VICTORIA**  
 State Government

**Western Health**

REV.	DETAILS	DATE
25	WHEREAS APPROVED PLANNING CHANGES	07/09/2017
26	FLOOR PLAN AMENDMENTS	14/09/2017
A	ISSUE FOR CONSTRUCTION	12/10/2017
B	ISSUE FOR CONSTRUCTION - SPEEDPANEL (LL-000A-000177 (LL-000A-000182))	06/11/2017
C	ISSUE FOR CONSTRUCTION - INTERNAL GLAZING (LL-000A-00032 & LL-000A-000181)	17/11/2017
D	CONCRETE PROFILES & WALL AMENDMENTS (LL-000A-00044)	20/11/2017
E	ISSUE FOR INFORMATION - SECONDARY WALLS (LL-000A-00018, LL-000A-00019, LL-000A-00020, LL-000A-00021, LL-000A-00022, LL-000A-00023, LL-000A-00024, LL-000A-00025, LL-000A-00026, LL-000A-00027, LL-000A-00028, LL-000A-00029, LL-000A-00030, LL-000A-00031, LL-000A-00032, LL-000A-00033, LL-000A-00034, LL-000A-00035, LL-000A-00036, LL-000A-00037, LL-000A-00038, LL-000A-00039, LL-000A-00040, LL-000A-00041, LL-000A-00042, LL-000A-00043, LL-000A-00044, LL-000A-00045, LL-000A-00046, LL-000A-00047, LL-000A-00048, LL-000A-00049, LL-000A-00050, LL-000A-00051, LL-000A-00052, LL-000A-00053, LL-000A-00054, LL-000A-00055, LL-000A-00056, LL-000A-00057, LL-000A-00058, LL-000A-00059, LL-000A-00060, LL-000A-00061, LL-000A-00062, LL-000A-00063, LL-000A-00064, LL-000A-00065, LL-000A-00066, LL-000A-00067, LL-000A-00068, LL-000A-00069, LL-000A-00070, LL-000A-00071, LL-000A-00072, LL-000A-00073, LL-000A-00074, LL-000A-00075, LL-000A-00076, LL-000A-00077, LL-000A-00078, LL-000A-00079, LL-000A-00080, LL-000A-00081, LL-000A-00082, LL-000A-00083, LL-000A-00084, LL-000A-00085, LL-000A-00086, LL-000A-00087, LL-000A-00088, LL-000A-00089, LL-000A-00090, LL-000A-00091, LL-000A-00092, LL-000A-00093, LL-000A-00094, LL-000A-00095, LL-000A-00096, LL-000A-00097, LL-000A-00098, LL-000A-00099, LL-000A-00100)	30/11/2017
F	ISSUE FOR CONSTRUCTION	21/02/2018
G	ISSUE FOR CONSTRUCTION	23/02/2018
H	ISSUE FOR CONSTRUCTION	06/07/2018
I	ISSUE FOR CONSTRUCTION	12/10/2018

Level 3, 246 Bourke Street  
 Melbourne Victoria  
 Australia 3000  
 T +61 3 9500 2519  
 F +61 3 9500 2819  
 lyons@lyonsarch.com.au  
 www.lyonsarch.com.au

**Lyons**

**PROJECT**  
 JOAN KIRNER WOMEN'S  
 AND CHILDREN'S HOSPITAL  
 FURLONG ROAD, ST ALBANS

**DRAWING TITLE**  
 LEVEL 7 FLOOR PLAN

**JOB No. DRAWN CHECKED DATE**  
 SH05 YC SM JUN '17

**DRAWING No. REVISION**  
 AR-22 - 22007 1

**FOR CONSTRUCTION**

**SCALE**  
 1 : 100 @B1

**NORTH**

FILE: C:\Users\BOS\BASE BUILDING\1\_Architecton\Melb\Level 7  
 PRINTED: 12/10/18 3:53:20 PM

ALL DIMENSIONS ARE IN MILLIMETERS, DO NOT SCALE DRAWINGS  
 FOR CRITICAL DIMENSIONS, CHECK DRAWING IS TO SCALE BY  
 MEASURING SCALE BAR BELOW. VERIFY ALL DIMENSIONS ON SITE  
 BEFORE COMMENCING ANY WORK. SHOP DRAWINGS OR ORDERING  
 MATERIALS.



